

BODYCRAFT

# DUALPRO

SPEED + CADENCE SENSOR



## Owners Manual

### FEATURES

#### Dual Band Technology

The sensor can connect to Tablets, Smartphones and ANT+ bike computers via its ANT+ and Bluetooth capabilities.

#### Wireless Connection

The sensor wirelessly sends out speed and cadence while pedaling. Easy installation, no magnet required.

#### Accurate Measurement

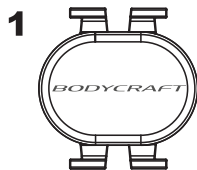
Provides you with accurate speed and cadence data during your ride.

### APPS (Android / iOS)

Compatible with apps like Wahoo Fitness and Zwift. Visit [WWW.BODYCRAFT.COM](http://WWW.BODYCRAFT.COM) for list of updated apps to try.

Compatible with iPhone 4S or later, and with selected Android devices using Android 4.4 or later and support Bluetooth 4.0.

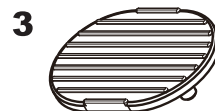
### IN THE BOX



Speed/Cadence  
Sensor

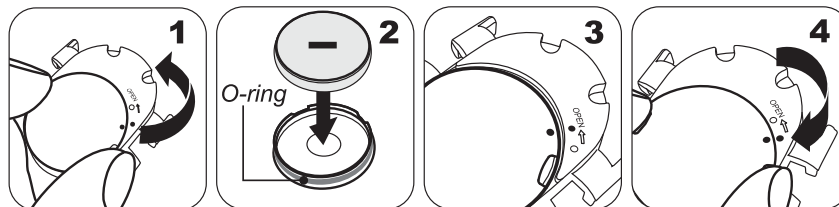


Crank rubber ring



Crank rubber pad

### BATTERY INSTALLATION



1. Twist the battery cover counter-clockwise to **OPEN** and remove the cover.
2. Place the battery (CR 2032) into the cover with positive (+) side facing the inside of the battery cover. Check that the O-ring is in the groove of the battery cover.
3. Replace the battery cover by aligning the cover dot with **OPEN**.
4. Press and twist the cover clockwise back into place (the cover dot aligns to **LOCK**).
5. Confirm that the battery back cover is indeed locked to ensure water resistance.

# SENSOR INSTALLATION

**NOTE: Please read all of the following steps prior to installation.**

1. Place the sensor on the crank rubber pad with logo facing out. On the Left Side, position on the crank arm as shown.
2. Pull the crank rubber ring around the crank arm, and attach it to the hook on both sides of the sensor.
3. Rotate the crank arm for contact or interference, the sensor **should not** move or touch any part of your shoe or bike.



## Using your Dual Cadence/Speed Sensor

1. Download the Wahoo Fitness app or similar from either the Apple App Store or the Google Play Store.
2. Begin pedaling and start the App on your phone or tablet. Let the App pair with the sensor **BC DUAL SENSOR + XXXXX**. It may take 5 seconds or more of cycling in order to wake up the sensor. the sensor's LED will flash once. (**NOTE: DO NOT** pair the sensor using the Bluetooth menu in the phone or tablet).
3. The sensor will flash every 3 seconds during the detection period, and then flashes every 5 seconds if there is a Bluetooth connection. After 100 consecutive flashes, the LED's automatically turn off to save battery power.
4. If you are using a Bluetooth Heart Rate belt or armband, you may be able to pair it at this time.

## ANT+ / Bluetooth Info

1. The Bluetooth and ANT+ dual cadence / speed sensor is compatible with most ANT+ cycle meters and other ANT+ devices. For more info please refer to "<http://www.thisisant.com/directory>" to find more compatible devices.
2. Some smart phones and tablets have the built-in the ability to connect to ANT+ devices, but others may require ANT+ dongle to activate ANT+ functions.
3. Every Bluetooth and ANT+ device has it's own unique settings and operation methods, such as "how to pair". Please refer to the devices' user manual.
4. ANT+ and Bluetooth can used simultaneously with no interference.

## Troubleshooting

### 1. Sensor will not pair Bluetooth/ANT+

- Sensor pairing must be performed within the APP, not the device's Bluetooth menu.
- Turn the Bluetooth off and then back on again.
- In the App, select "forget device" and then reconnect.
- If the sensor is connected to another user, they must disconnect before you can connect. NOTE: you may also need to restart the app before trying again.
- Remove the sensor battery for 1 minute then reinstall.
- You may be receiving interference from electromagnetic sources.
- Your Bluetooth device must be equipped with Bluetooth 4.0 or higher. You must have Android 4.3 or Higher and Apple iOS 6 or higher.

### 2. No Cadence / Speed

- Confirm that the Bluetooth/Bluetooth Access is "on" in your settings. For Apple, this would be in the "App settings", for Android this is in the phone's settings.
- Try another phone or Tablet to rule out the receiving device.
- Try another App to rule out a problem with the installed app.
- Reboot the phone or tablet.
- Try uninstalling and then reinstalling the app.
- Install a new battery in the sensor.

### 3. Incorrect Cadence / Speed Value

- Replace the battery in the sensor.

## Warranty

**VALID FOR USA AND CANADA ONLY** (Please consult with your local distributor for warranty info specific to your region).

REGISTER your product with 30 days of receipt at [WWW.BODYCRAFT.COM](http://WWW.BODYCRAFT.COM) or call our customer service department at 800-990-5556.

BODYCRAFT warrants its products to be free of defects in materials and workmanship for the time stated below to the original purchaser.

**Warranty:** 1 Year Parts, [1] Year Wear Items. No Labor

**This warranty is valid only in accordance with the following conditions:**

- The warranty begins on the original purchase date at retail and ends when the original owner disposes of it, either through sale, gift, or otherwise. This warranty is not transferable and is only valid to the original purchaser.
- This warranty is available only for purchases made within and the original purchaser currently residing in the USA and Canada. Please consult with your local distributor for warranty info specific to your region.
- The product must have been registered within 30 days of the original purchase date or supply proof of purchase to validate warranty (original sales invoice).
- This warranty does not cover damage resulting from accident, misuse, water, tampering, unauthorized repairs, improper repairs, alterations or normal wear and tear.

**This warranty excludes the following:**

- The warranty does not cover normal maintenance or labor charges.
- Normal cosmetic wear on parts such as paint, seat coverings, walk belts, pedal straps, wheels, foot rails, labels and logos.
- Consumables such as batteries and heart rate belts that do not have a replaceable battery.
- Eprom/Software version upgrades unless determined as necessary.
- Any accessories not included in the original packaging.

If the item exhibits such a defect, BODYCRAFT will, at its option, repair or replace it without cost for parts. Parts may vary in model number, size, color and style but will properly fit and function. Parts repaired or replaced will be warranted for the remainder of the original warranty period only. Shipping and handling charges may apply.

For us to fulfill the warranty we may request or require all or some of the following:

Proof of purchase, Serial number, return of the part(s) or photographic evidence of the damaged part(s) prior to replacement.

\*This warranty is in lieu of all warranties, expressed or implied, and/or all other obligations or liabilities on our part and we neither assume nor authorize any person to assume for us any other obligation or liability in connection with the sale of your BODYCRAFT product. Under no circumstances shall we be liable by virtue of this warranty or otherwise for damage to any person or property whatsoever for any special, indirect, incidental, secondary or consequential damage of any nature whatsoever arising out of the use or inability to use this BODYCRAFT product.

# SPECIFICATIONS

- Model: SP-Sensor Pro - SC003
- Dimensions: L35 × W35.4 × D8.25mm
- Weight: 4.9g
- Waterproof: IPX7
- Accuracy: +/- 2 %
- Detected Cadence range: 10~240 rpm
- Operating temperature: -10~60°C (14~140°F)
- Wireless transmission interface: Bluetooth 4.0 / ANT+
- Wireless transmission frequency: 2.402~2.480 GHz
- Battery: CR2032
- Battery life: approximately 300 Hours

## FCC

### Federal Communications Commission Statement

This device complies with FCC Rules Part 15. Operation is subject to the following two conditions:

- This device may not cause harmful interference.
- This device must accept any interference received, including interference that may cause undesired operation.

This equipment has been tested and found to comply with the limits for a class B digital device, pursuant to Part 15 of the Federal Communications Commission (FCC) rules. These limits are designed to provide reasonable protection against harmful interference in a residential installation. This equipment generates, uses, and can radiate radio frequency energy and, if not installed and used in accordance with the instructions, may cause harmful interference to radio communications. However, there is no guarantee that interference will not occur in a particular installation. If this equipment causes harmful interference to radio or television reception, which can be determined by turning the equipment off and on, the user is encouraged to try to correct the interference by doing one or more of the following measures:

- Reorient or relocate the receiving antenna.
- Increase the separation between the equipment and receiver.
- Connect the equipment into an outlet on a circuit different from that to which the receiver is connected.
- Consult the dealer or an experienced radio/TV technician for help.

### FCC Caution

Any changes or modifications not expressly approved by the party responsible for compliance could void the user's authority to operate the equipment.

The antenna(s) used for this transmitter must not be co-located or operating in conjunction with any other antenna or transmitter.

### MPE

This equipment must be installed and operated in accordance with provided instructions and the antenna(s) used for this transmitter must be installed to provide a separation distance of at least 20 cm from all persons and must not be co-located or operating in conjunction with any other antenna or transmitter.