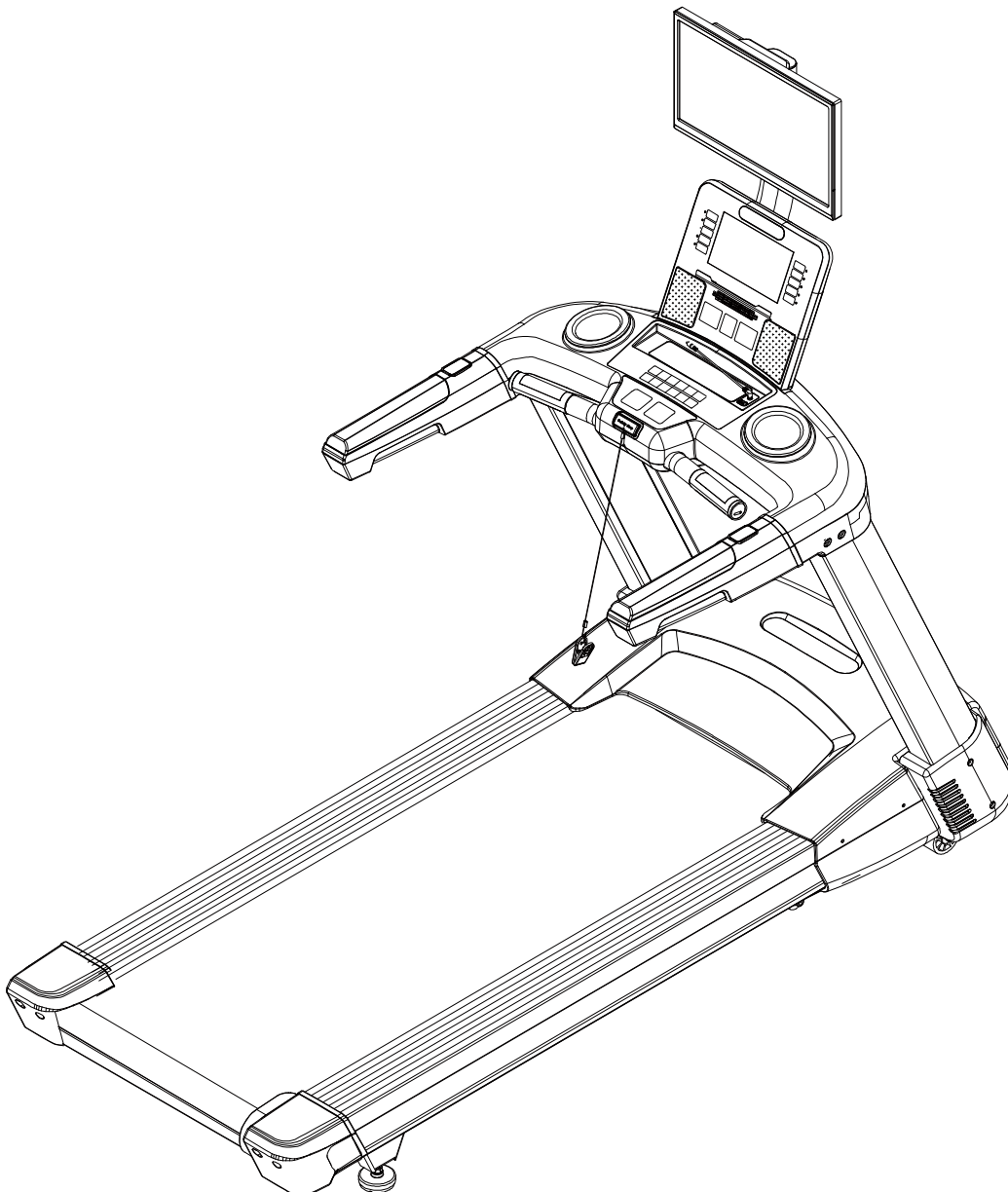


BODYCRAFT

TV Rack Assembly Manual

19" / 23"

Designed specifically for bve™ brand TV's.



WWW.BODYCRAFT.COM



800-990-5556



SERVICE@BODYCRAFT.COM

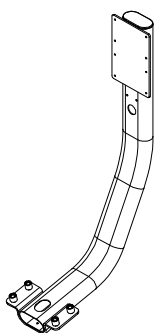
COMPLETE PARTS LIST

**NOTE: Some Parts
listed below are pre-installed.**

PART NO.	Name	Qty
1	TV RACK	1
2	Snap Bushing	3
3	End Cap	1
4	TV RACK COVER	1
5	Screw M8*35	4
6	Spring Washer M8	4
7	Flat Washer M8*16*1.2	4
8	Screw M5*16	2
9	Support plate for 23" TV	1
10	Screw M5*12	4
11	Screw M4*10	8
12	Spring Washer M4	8
13	Flat Washer M4*12*1.0	8
14	Screw M4*16	2
15	Support plate for 19" TV	1
16	Screw M3*50	2
17	Flat Washer M3*10*0.8	2
18	Self Adhesive Tie Mount	5
19	SUPPORT PLATE for 19" TV	1
20	Zip Tie	5

Contact Bodycraft Sales for information on broadcastvision entertainment TV's (bve™) and additional entertainment hardware designed for this mount. 1-800-990-5556.

ASSEMBLY PARTS LIST



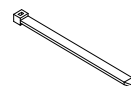
TV RACK



**TV
RACK
COVER**



**M8*35L SCREW
(QTY: 4)**



**Zip Tie
(QTY: 5)**



**M8 SPRING
WASHER (QTY: 4)**



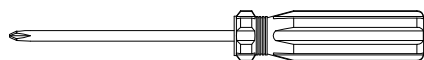
**M8*16*1.2 FLAT
WASHER (QTY: 4)**



**M5*16L SCREW
(QTY: 2)**



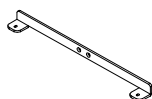
**SELF ADHESIVE
TIE MOUNT (QTY: 5)**



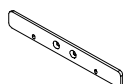
SCREWDRIVER



M6*191L HEX KEY TOOL



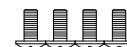
**SUPPORT PLATE
for 23" TV**



**SUPPORT PLATE
for 19" TV**



**M5*12L SCREW
(QTY: 2)**



**M4*10L SCREW
(QTY: 4)**



**M4*12*1.0 FLAT
WASHER (QTY: 4)**

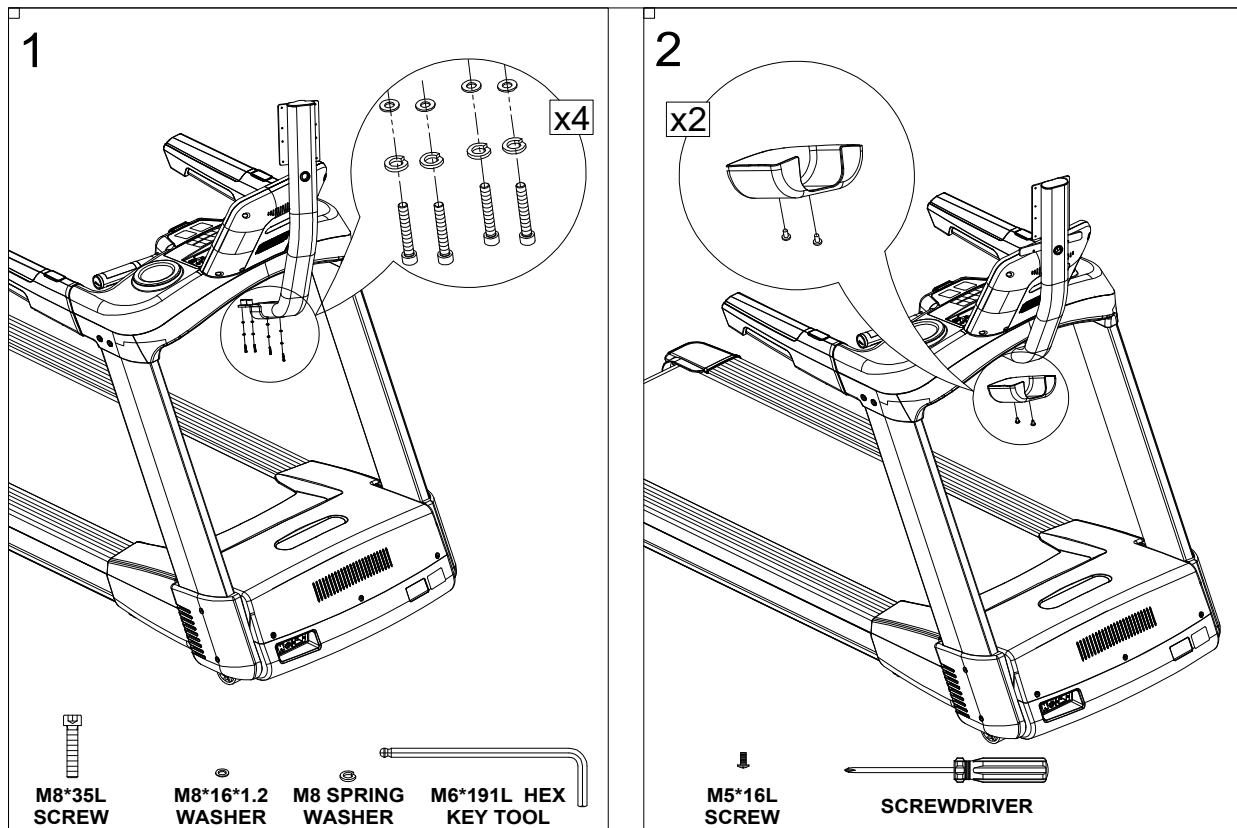


**M4 SPRING
WASHER (QTY: 4)**



**M4*16L SCREW
(QTY: 2)**

INSTALL TV RACK STEPS 1-2

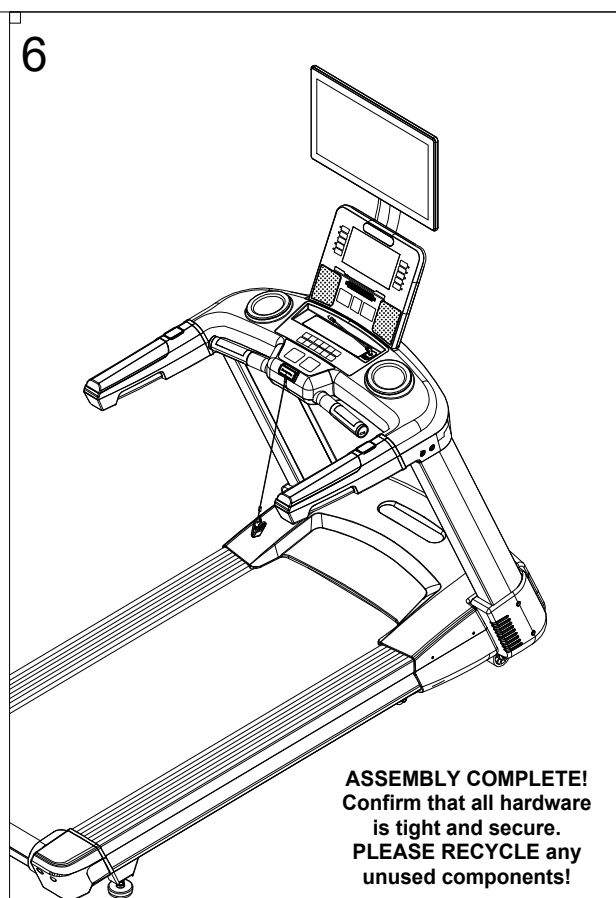
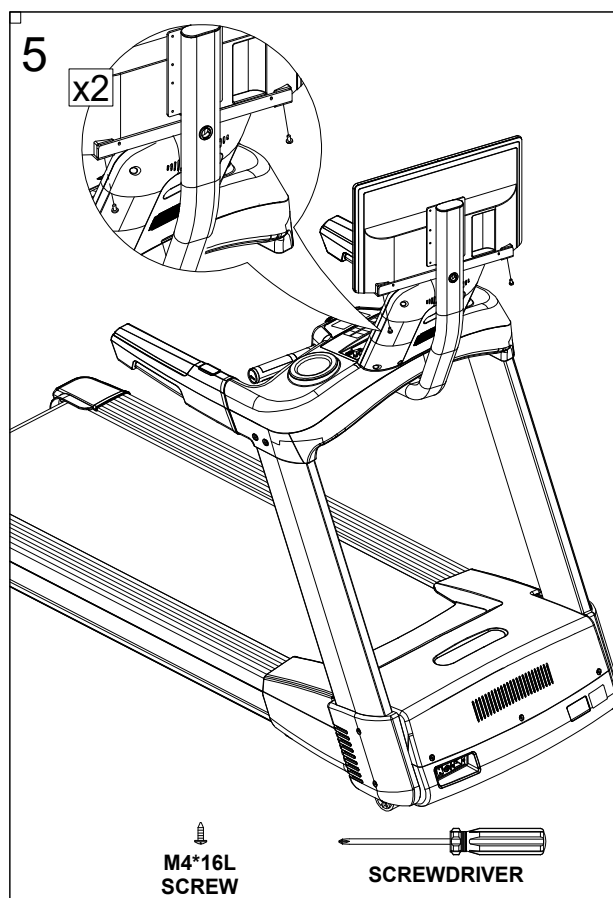
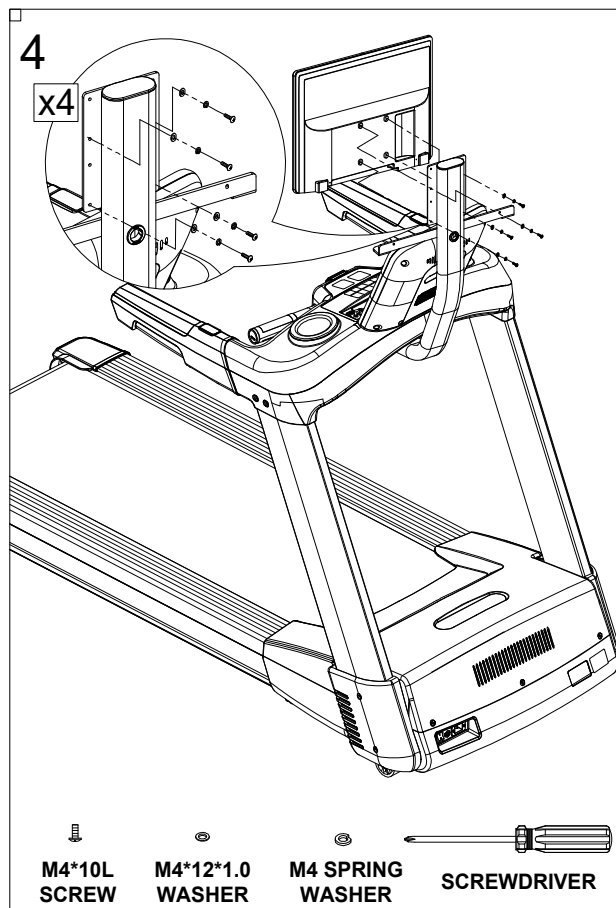
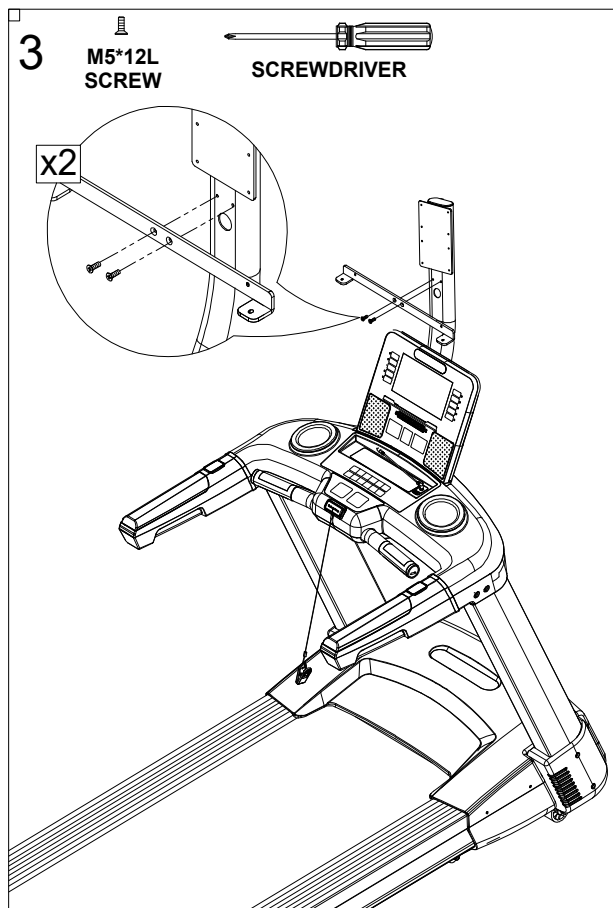


IMPORTANT!

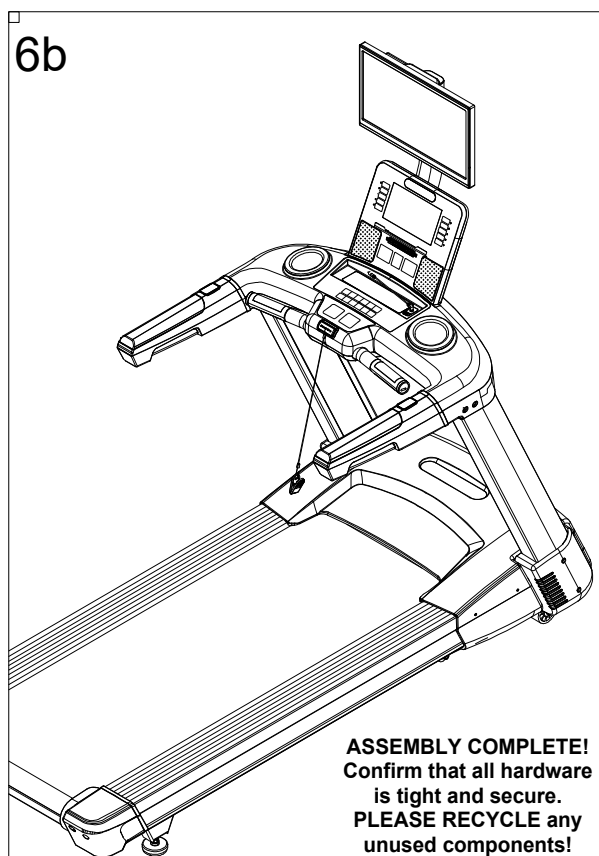
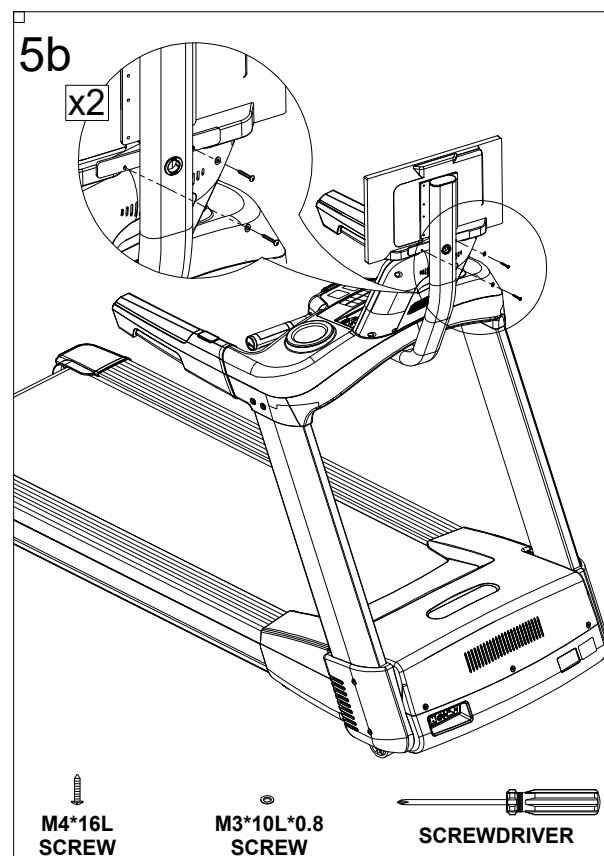
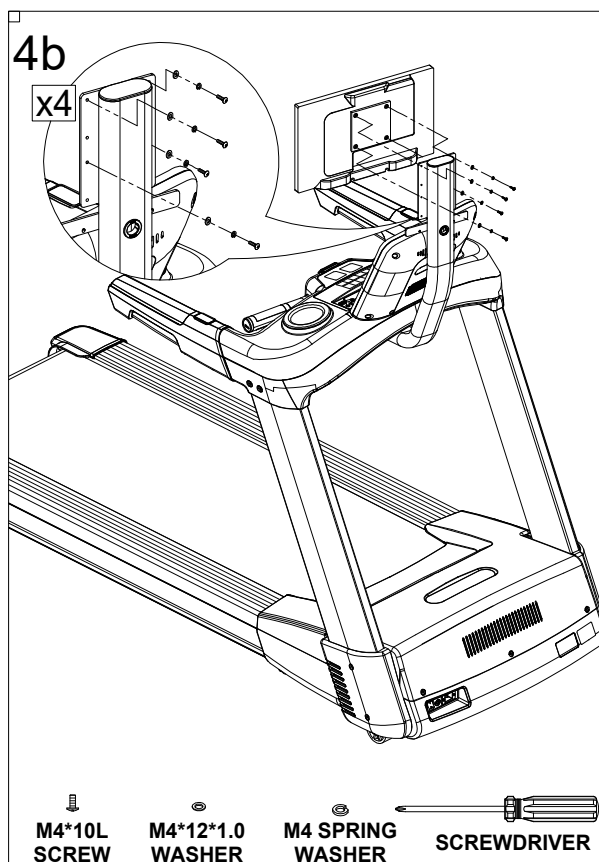
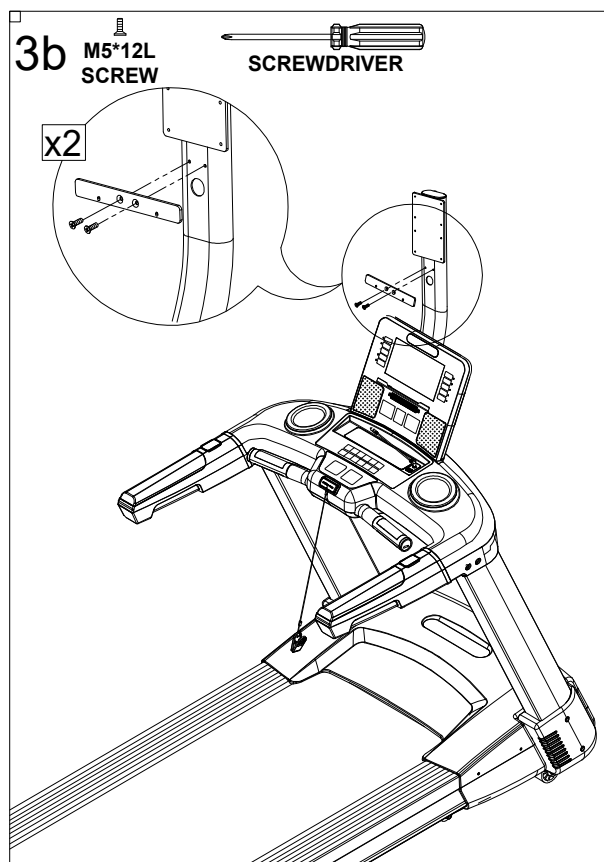
For 23" bve™ TV installation
follow the instructions on Page 4

For 19" bve™ TV installation
follow the instructions on Page 5

STEPS FOR 23" TV MOUNT

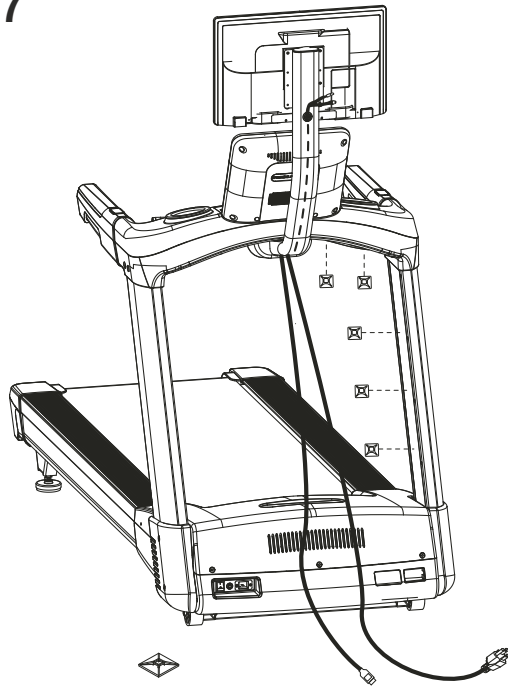


STEPS FOR 19" TV MOUNT



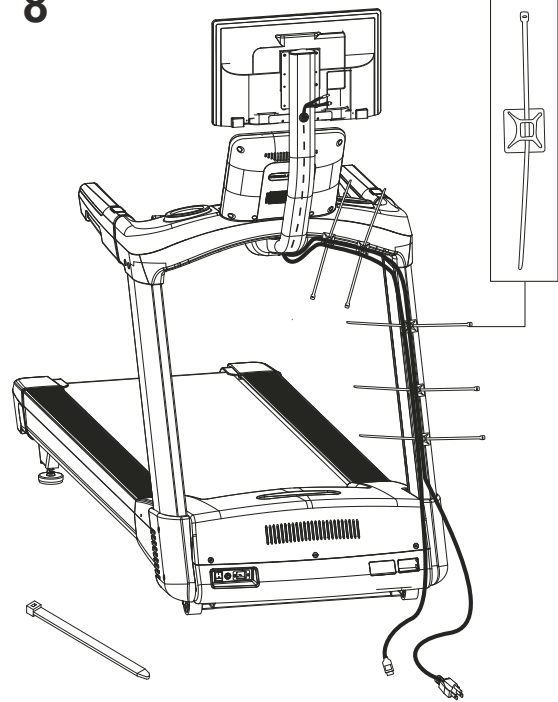
STEPS FOR 19" 23" TV MOUNT

7



**SELF ADHESIVE TIE
MOUNT (QTY: 5)**

8



**Zip Tie
(QTY: 5)**